



Established 1925

KANSAS GEOLOGICAL SOCIETY

BULLETIN

Volume 89 Number 3

May—June 2014

IN THIS ISSUE

*Memorial:
Kris Kennedy*

KGS Golf Tournament
Registration Flyer Inside



Robert F. Walters Digital Library

The most complete source for Kansas data

Day or Night
You can get to the data as you need it

www.kgslibrary.com

To Join: call 316-265-8676

The screenshot displays the Robert F. Walters Digital Geological Library website. The main content area features a table of well records with columns for Well No., Spot, Location, H.S., E.W., Spud, Completion, Depth, E.I.B., E.I.F., E.I.G., and Status. The table lists several wells in Comanche County, Kansas, including well 10-215-16W.

Well No.	Spot	Location	H.S.	E.W.	Spud	Completion	Depth	E.I.B.	E.I.F.	E.I.G.	Status
10-215-16W	230	FEEL	3200	PSL	1980	FEL	12/01/1987	5100	3004		
10-215-16W	440	FEEL	440	PSL	1320	FEL	12/05/1960	4990	2083		
10-215-16W	2310	FEEL	2310	PSL	1320	FEL	12/05/1960	5025	2052		
10-215-16W	1320	FEEL	1320	PSL	1320	FEL	06/01/1964	4650	2037		
10-215-16W	2960	FEEL	1320	PSL	2960	FEL	07/03/1963	5465	2040		
10-215-16W	4290	FEEL	4290	PSL	2970	FEL	10/27/1963	4690	2006		

Below the table, there are several preview windows. One shows a 'Completion Card - IOG' for well 10-215-16W. Another shows a 'Well Log' for well 10-215-16W, including a 'LATEROLOG SURVEY' section. The well log details the well name, location, completion, and test data.

Table of Contents

Features

Memorial.....18

Departments & Columns:

KGS Tech Talks4
President’s Letter7
Advertiser’s Directory8
From the Manager..... 9
KGS Board Minutes10
Professional Directory19 & 20
Exploration Highlights24 & 25
Kansas Geological Foundation Memorials.....26

ON THE COVER:

A group of Wichita State Geology students on their spring break field trip to the Guadalupe Mountains of New Mexico. The trip covered White Sands, Carlsbad Caverens and lots of outcrops.

CALL FOR PAPERS

The Kansas Geological Society Bulletin, which is published bimonthly both in hard-copy and electronic format, seeks short papers dealing with any aspect of Kansas geology, including petroleum geology, studies of producing oil or gas fields, and outcrop or conceptual studies. Maximum printed length of papers is 5 pages as they appear in the Bulletin, including text, references, figures and/or tables, and figure/table captions. Inquiries regarding manuscripts should be sent to Rebecca Radford, manager@kgslibrary.com or mailed to 212 N. Market, Ste. 100, Wichita, KS 67202. Specific guidelines for manuscript submission appear in each issue of the Bulletin, which can also be accessed on-line at the Kansas Geological Society web site at <http://www.kgslibrary.com>

SOCIETY Technical Meetings

2014 Technical Talks - NEW LOCATION!!!

May 27—Larry Richardson's WSU Class presentations of field studies

For More Information or suggestions of speakers
Please contact Dave Clothier: dave@mccoypetroleum.com

No More Talks Until September

NOTICE!!

NEW Location for Technical Meetings

All KGS technical presentations are held at 12:30 p.m. at the Landmark Square Building, located at 212 N. Market. We have a new meeting room on the 4th floor, up the stairs and at the end of the hallway in the Wisdom Center.

Note: For those geologists who need 30 points to renew their licenses, there will be a sign-in sheet at each presentation and also a certificate of attendance.

Please remember to check the website
For the most up to date information on Technical Talks

www.kgslibrary.com
(For the most information, go to the Tech Talks tab)



BOARD OF DIRECTORS

PRESIDENT

Brian Fisher

PRESIDENT-ELECT

Frank Mize

SECRETARY

Leah Kasten

TREASURER

Paul Ramondetta

DIRECTORS

Dave Clothier

Tim Hellman

Frank Mize

ADVISORS

Tom Hansen

Larry Richardson

COMMITTEE CHAIRMEN

Advertising

Kent Scribner

Advisory

Tom Hansen

Larry Richardson

Annual Banquet

Bob Bayer

Budget Committee

Paul Ramondetta

Bulletin

Rebecca Radford

Continuing Education

Robert Cowdery

Distinguished Awards

Dave Clothier

Environmental

Kent Matson

Field Trip

Larry Skelton

Fishing Tournament

Randy Teter

Future Plans

Chuck Brewer

Golf

David Barker

Historian

Larry Skelton

Investment

Paul Ramondetta

Library

Roger Martin

Ted Jochems

Membership

Larry Friend

Nomenclature

John H. Morrison, III

Picnic

Wes Hansen

Public Relations

Robert Cowdery

Shooting Tournament

Larry Richardson

Technical Program

Dave Clothier

Ticket Sales

Bill Shepherd

A.A.P.G. DELEGATES

Robert Cowdery 2018 Douglas Davis 2018

BULLETIN STAFF

EDITOR

Rebecca Radford—Interim (316) 265-8676

ADVERTISING

Kent Scribner
Stelbar Oil Corp. (316) 264-8378

PROFILES/MEMORIALS

Robert D. Cowdery
Consultant (316) 267-9030

EXPLORATION HIGHLIGHTS

John H. Morrison, III
Independent O&G (316) 263-8281

STATE SURVEY

Rex Buchanan
KS Geological Survey (785) 864-3965

SOCIETY NEWS

KGS Library (316) 265-8676

EDITOR EMERITUS

Wes Hansen (316) 263-7313
Larry Richardson (316) 262-8427

K.G.S. LIBRARY

PHONE 316-265-8676 FAX 316-265-1013

email: frontdesk@kgslibrary.com or

Web: www.kgslibrary.com

LIBRARY MANAGER

Rebecca Radford 265-8676

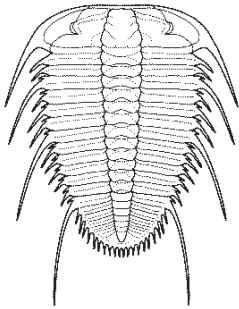
manager@kgslibrary.com

The KGS *Bulletin* is published bi-monthly by the Kansas Geological Society, with offices at 212 North Market, Wichita, Kansas 67202 Copyright 2014, The Kansas Geological Society. The purpose of the *Bulletin* is to keep members informed of the activities of the Society and to encourage the exchange and dissemination of technical information related to the Geological profession. Subscription to the *Bulletin* is by membership in the Kansas Geological Society. Limited permission is hereby given by the KGS to photocopy any material appearing in the KGS *BULLETIN* for the non-commercial purpose of scientific or educational advancement. The KGS, a scientific society, neither adopts nor supports positions of advocacy, we provide this and other forums for the presentation of diverse opinions and positions. Opinions presented in these publications do not reflect official positions of the Society.



Twenty-two Trucks Serving
Kansas—Colorado—Texas—Nebraska—Illinois

DST's
Back Pressure testing (G1 & G2)
Slick line services using the same Weatherford
Electronic Pressure Gauges used on DST's



1-800-728-5369
FAX 1-785-625-5620

www.trilobitetesting.com
trilobite@eaglecom.net

SHOPS LOCATED IN:
Hays, KS
Scott City, KS
Pratt, KS
Hugoton, KS
Oberlin, KS
Clay City, IL

CAN YOU NAME THE CRITTER?

Sponsored by Trilobite Testing, Inc.

Is your paleo up to date?

If you know the name of the trilobite,
submit your guess via e-mail to
manager@kgslibrary.com

Remember that *Trilobite Testing* is
sponsoring your efforts, so be sure to thank
Paul Simpson the next time you see him.

**Bulletin committee members and PhD's in
Paleontology are prohibited from entering.**



We've upgraded!!!

We now have a 44" Context Scanner

AND

A 44" Cannon Plotter



**Bring in your old maps,
we have scanned several
and they look great!**

Our pricing Special:

Solid color @ \$4.00/sq. ft.
Line maps w/color @ \$3.00/sq. ft.



President's Letter

Dear Friends and Colleagues,

Earlier this month my wife Elaine and I attended the 2014 Annual AAPG Convention and Exhibition (ACE) in Houston, attendance was over 9,000 attendees which included geologists, students and engineers from all over the world. ACE 2014 offered more than 800 oral and poster presentations that covered 11 different themes with a large Exhibit Hall filled with vendors and exhibitors. The papers were varied and interesting. I have to admit for the oral presentations I sometimes had to walk quickly during intermission to be present for the start of the next talk. Overall I enjoyed attending the AAPG meeting and representing our society as your president.

We are now nearing the end of our spring series of speakers and we will resume again this fall. I want to thank again our committee: Dave Clothier, Sonja McDanel and Hi Lewis for keeping us supplied with a varied and interesting slate of speakers. If anyone has any suggestions for speakers, please contact the committee and they will work to get them on the schedule. So far the fall lineup is wide open. Elaine and I also enjoyed attending the Kansas Geological Foundation talk and mixer last week – Mike Smith is always an interesting and entertaining speaker for our Society and Foundation.

Some Society news - we are carefully looking into strategies to reinvest some of our savings to achieve a higher yield rather than day to day interest. Recently Dave Clothier, Chuck Brewer, Hi Lewis, Lynn Watney with other members and stakeholders attended an invitation only program: “Induced Seismicity State Tasks Force Meeting” that was recently held on April 16th. One of the findings presented was a graph illustrating the number of measurable seismic events in 2014 has now exceeded the number of events in all of 2013. After the presentations, we meet in smaller work groups and offered comments to a moderator. I requested that the Kansas State Geological Survey take the lead on this issue, acquire equipment, conduct research, present findings and if needed - make recommendations to the Kansas Corporation Commission. Hopefully any new resulting regulations will allow Kansas oil and gas operators to continue with normal cost effective operations and will not hinder oil and gas exploration in any way for Kansas. Also a new potentially impacting issue to the oil business: “New regulations for the protection of the habitat of the Lesser Prairie Chicken”. These will have a substantial impact on all types of Kansas business. Also please note I will be having another past presidents meeting in late May. Look for an announcement on the KGS website.

Don't forget the upcoming KGS Golf, Fishing Tournaments and the Fall Picnic. Best of luck in all of your exploration efforts.

Respectfully Submitted,
Brian Fisher
KGS President 2014





KANSAS STATE UNIVERSITY

GEOLOGY
DEPARTMENT

GRADUATE EDUCATION
for active professionals

Through: Leading to:
Workshops Academic credits
Field Trips Certificates (pending)
Distance Education M.S. degree

With specializations in:
Petroleum Geology
Groundwater
Exploration Geophysics
Environmental Geochemistry

Information:
KSU Continuing Education: www.dce.ksu.edu
KSU Geology Department: www.ksu.edu/geology
KSU Graduate School: www.ksu.edu/grad
or e-mail George Clark, interim dept. head: <grc@ksu.edu>

ADVERTISER'S DIRECTORY

	<i>page</i>
Allied Cementing Company, Inc	23
American Energies Corp. Nitrogen Rejection	13
Breckenridge Exploration Company	15
Duke Drilling	23
GeoCare Services AAPG	17
GeoSteering	14
Global Geophysical Services, Inc.	15
Kansas Geological Foundation	26
Kansas State University	8
Lockhart Geophysical	23
Lone Star Geophysical Surveys	16
MJ Systems	21
MBC Well logging	23
Murfin Drilling Company, Inc	23
Neuralog	15
PARAGON Geophysical Services, Inc	13
Pratt Well Service	15
Professional Directory	19-20
Sterling Seismic Services	13
Sunrise Oilfield Supply	23
Tomcat Drilling	23
Trilobite Testing	6
Walters Digital Library	2
Weatherford	27
Well Enhancement Services	14

Log in to
Walters Digital Library
At
www.kgslibrary.com

Log in as our guest
and see the Society's Database

A convenient way to see what
you might want to order!
Call or email your order to:
316-265-8676
frontdesk@kgslibrary.com

ADVERTISER'S RATES: 2014

Full Page	B&W	Color
6 issues	\$2,000	\$2,500
3 issues	\$1,080	\$1,325
1 issue	\$480	\$525
1/2 Page		
6 issues	\$1,000	\$1,500
3 issues	\$540	\$825
1 issue	\$225	\$350
1/4 Page		
6 issues	\$600	\$900
3 issues	\$325	\$525
1 issue	\$150	\$250
1/8 Page		
6 issues	\$300	\$500
3 issues	\$175	\$325
1 issue	\$75	\$185
Professional Ad (Business Card)		
6 issues	\$90	\$180

For one-time ads, call Rebecca at 316-265-8676

From The Manager

Dear Members,

Spring is here with summer coming soon and Kansas remains a busy place in the oil industry. Even though not too many people come into the library to work for the day, we are filling lots of orders and new people keep joining the Society. We are nearly 800 strong now in our Society membership and the digital membership has reached an all time high of 306 members.

We keep adding more data to the digital archive and library. The donated data that the Foundation owns is providing approximately 23% new data going into our files. This is usually the older data, one-of-a-kind, and we are thrilled as that is very unique data that you most likely will not find anywhere but here.

The **Foundation** board has been going through old donated maps that have been in the basement for years. We have boxes of maps that are being put out on the library floor for free as well as a few boxes of \$1.00 maps and \$5.00 maps. We have sold some and given some of the free maps to visiting geology students but want everyone to be aware that you Society members can come in and browse through these and see if there is anything that you might use. We also have retained a great number of maps that we will eventually scan (for archiving) and be able to print copies from. If you do not support the Foundation presently, please consider joining. \$50.00 is the minimum membership and that is completely tax deductible. Not only are we getting the best collection of data by their efforts but we also help several geology students in the state by awarding scholarships each semester. If you are having some good fortune out there in the oil field, maybe it's time to give a little back.

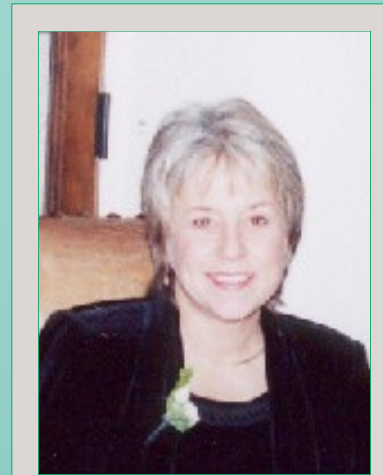
We are pleased to announce that one of our staff, Bonnie Funk, gave birth to a beautiful little boy, Dominic, on April 18th. Our congratulations go out to her and her husband!

*Please note that the library will be closed for Memorial Day, May 26th.

Respectfully submitted,

Rebecca Radford

Manager



Let Us Print Your Geo Reports
And Save Your Time For Finding More Oil & Gas
Top Quality Color Printing For Our Membership

Email your files to: kgsorders@gmail.com

Kansas Geological Society Board Minutes

The monthly meeting of the Board of Directors of the Kansas Geological Society was held on February 11, 2014. President Brian Fisher called the meeting to order at 11:37 AM

PRESIDENT'S STATEMENT – Mr. Fisher welcomed board members and gave summary of upcoming KGS events and activities.

APPROVAL OF MINUTES - The January 14, 2014 minutes were reviewed. Motion was made to approve minutes as written by Frank Mize, seconded by Dave Clothier. Motion passed by unanimous vote.

FINANCIAL REPORT/MANAGERS REPORT

A. Treasurer's Report - Paul Ramondetta presented the Treasurer's report for January 2014. He reported interest accrued from CD's at \$465.81 for the month of January and YTD total for 2014. He brought up discussion that KGS Funds are currently in CD's and cash, and some of these monies should be re-allocated to secure investments with a higher rate of return. Frank Mize moved to accept the Treasurer's Report, Tim Hellman seconded, and the vote carried unanimously.

B. Manager's Report- Mrs. Rebecca Radford presented the Manager's Report for January, 2014. Total income for the month was \$66,993.07, with expenditures of \$56,603.17, thus generating a net gain of \$10,389.90. The year to date gain is, therefore, \$10,389.90. The Walters Digital Library report shows current membership of 257 members. The Digital Library had a net income of \$23,421.14 after expenses in January, with year to date income being the same. Manager's report was approved unanimously.

OLD BUSINESS

A. Investment Policy – Discussion led by Brian Fisher regarding Investment Policy adopted in 2004 determined that no changes are needed and it will serve as suitable guideline for upcoming investment recommendations.

B. Formation of Investment Committee – Paul Ramondetta will serve as Chair. Additional members: Tim Hellman, Tom Hansen, Brian Fisher, Leah Kasten and Rebecca Radford. Committee will meet with 3 or more financial advisors and make investment recommendations to the board.

NEW BUSINESS

A. Review Library policy regarding new paper logs – Rebecca Radford reviewed the policy on printing paper logs that are new to the collection (from KCC, Survey). Currently, prints are made only when requested by members due to high costs of printing and limited file storage space. (She projected \$165,000 in paper costs alone for the 46,000 new logs now in digital form) Board discussion resulted in no changes to policy. It was suggested, however, to add signage in the library stating that the paper log collection may not be complete and paper copies will be made available for library use upon request for no charge. Announcement will be made at Tech Talks and in the KGS Bulletin. All new geological reports are printed and placed in paper file collection.

B. Use of Wisdom Center - Rebecca Radford discussed use of Wisdom Center by WSU Geology Club on 2/21. She suggested bringing in cable television during the month of March so members could watch March Madness as a social activity. Additionally, chairs are coming in, but still waiting on microphone. Equipment in the room has been added to insurance policy.

C. Fire Monitoring Equipment in the Library - Rebecca Radford concerned about the lack of fire monitoring as it was disabled when phone lines were cut. It can be re-established, but will cost \$400 for new equipment. She has not gotten any response from building manager to remedy the situation. Board supported her in contacting the landlord to get rectified immediately as this is a critical issue for the safe keeping of the Library assets.

D. Suggestions for Investment committee – Board members brought forward suggestions regarding the upcoming financial investment changes. Dave Clothier emphasized having enough cash on hand for operations. (Rebecca Radford recommended a minimum of \$150,000 for operating expenses, although some could be in the form of savings) He also recommended that accounts be set up with enough liquidity such that when our lease is up in three years, there would be adequate funds available to lay ground work for a new building location. Tim Hellman suggested initially using \$200,000 from current cash accounts for investment. Paul Ramondetta discussed setting up staggered CDs of 1 to 5 years, which could be turned over as they came due annually, which could increase yield of a current secure investment practice.

E. GeoGraphix Presentation – Dave Clothier mentioned this event will occur Mar 25th, and input from membership for useful content would be appreciated.

F. Tech Talk with older members – Discussion ensued regarding an event to give older KGS members an opportunity to share experience. Suggestions included hosting an evening dinner or informal discussion group at the library. This would serve as a social rather than technical event, and perhaps a service company could sponsor. Event should be set up by Tech Talk committee, or a separate committee established for these events.

G. Changes to WDL membership process & Fees- Reviewed current policy and fees. No changes recommended. It was suggested to monitor for possible “data dump” or other conspicuous activity to keep data from being downloaded by data vendors. It was recommended that we increase staff to get data gaps (East Ranges, etc) scanned as soon as possible. This could increase profits by improving services.

H. Field Trip – Board in agreement that a significant field trip would benefit membership and be a great tradition to establish. No further action taken at this time.

I. Contribution to WSU AAPG - (Conducted via email on 2/11/2014) Rebecca Radford (on behalf of Peter Weiland, Pres of WSU AAPG Student Chapter) asked that a \$50 donation be made to WSU AAPG Student Chapter so they could have start-up money for new shirts. Shirt orders will be made available to KGS members at the Library. Board unanimously agreed to the contribution.

VIII. ADJOURNMENT

Motion to adjourn made by Tim Hellman and seconded by Frank Mize. Meeting adjourned by Brian Fisher at 1:20 PM.

Respectfully submitted, Leah A. Kasten, Secretary

The monthly meeting of the Board of Directors of the Kansas Geological Society was held on March 11, 2014 at the Wichita Petroleum Club.

Brian Fisher called the meeting to order at 11:39 AM

PRESIDENT’S STATEMENT – Mr. Fisher welcomed board members/advisors and gave summary of upcoming KGS events and activities.

APPROVAL OF MINUTES - The February 11, 2014 minutes were reviewed. Motion was made to approve minutes as written by D. Clothier, 2nd by F. Mize. Motion passed by unanimous vote

FINANCIAL REPORT/MANAGERS REPORT

A. Treasurer’s Report – P. Ramondetta presented the Treasurer’s report for February. He reported interest accrued from CD’s at \$462.74 for the month of February, presenting YTD total of \$931.62 for 2014. Discussion regarding investment committee ensued. (See Old Business Items) Dave Clothier moved to accept the Treasurer’s Report, Frank Mize seconded, and the vote carried unanimously.

B. Manager’s Report- R. Radford presented the Manager’s Report for February, 2014. Total income for the month was \$55,358.09, with expenditures of \$68,950.10, thus generating a net loss of \$13,592.01. The year to date loss is, therefore, \$3,202.11. The Walters Digital Library report shows current membership of 262 members. The WDL had a net income of \$10,416.08 after expenses in January, with year to date income of \$33,847.22. Note that approx. \$9,100.00 from WDL was used for audio equipment expenses for Wisdom Ctr.

OLD BUSINESS

A. Investment Committee – Reviewed first meeting with financial advisor, Alan Taylor, w/ Edward Jones
Several options were discussed. Board should stay away from any investments that could risk principle. Consider cash investment in KGS (e.g., scanning, acquiring data,) to improve services, therefore improving income, (re-invest in organization rather than outside investing.) Time frame actually much less than 3 years because of need to evaluate potential move to new location well in advance of lease expiration. Cash monies we are evaluating originally came from sale of building, so that should still be considered as a possible goal for KGS. Will need to determine how aggressively KGS will pursue new location options before final decision made for investments – longer term (higher return) vs. shorter term (liquidity) Investment committee will meet with 3 more advisors and bring most suitable recommendations before the Board.

B. Landlord Response to Fire sensors & Lease copy: R. Radford concerned about making any capital investment (specifically fire sensor equipment) in this building due to poor communication by landlord. D. Clothier will contact landlord, if no response, it was suggested to deduct costs from rent payment.

C. Cable & Internet Install in Wisdom Center: R. Radford reported cable will be installed Mar 31. Chair delivery slower than expected, but supplier working with us and may adjust price.

NEW BUSINESS

A. Nomenclature Committee Change – R. Radford reviewed change in distribution of Kansas field nomenclature data sets from current card system to using an excel spread sheet. D. Clothier moved to approve new format, T. Hellman seconded. After clarification of current system, number of users, and impact of change for users, vote passed unanimously.

B. Support for Mike Smith – B. Fisher discussed providing financial support to the KGF Spring Mixer ,specifically to offset cost of speaker (Mike Smith speaking on weather near Earth Day). F. Mize moved to provide \$500 to KGF for speaker, T. Hellman seconded. Discussion ensued regarding final amount and potential outreach of mixer. Motion carried unanimously.

ADJOURNMENT

Motion to adjourn made by D, Clothier and seconded by F. Mize. Meeting adjourned by B. Fisher at 1:30 p.m.

Respectfully submitted, Leah A. Kasten, Secretary





Providing Quality Seismic Since 1993

Visit our website at
www.parangogeo.com



3500 N. Rock Rd., Bldg. 800, Wichita, KS 67226 316-636-5552
paragon@parangogeo.com

WANTED



LOW BTU GAS to Buy or Treat

www.NitrogenRejectionUnit.com



American Energies Corporation
 316-263-5785

Experience, Integrity, Innovation...



SEISMIC SERVICES, LTD.
www.sterlingseismic.com

**Renegade Seismic Studio Refraction Statics
 Z-White Spectral Enhancement
 Tsunami Pre-Stack Time Migration**

Projects from one square mile "Postage Stamp" 3Ds to the 1,100 square mile nine 3D merge through PSTM we completed in 2006, no project is too small or too big. All projects are given the same attention to detail that we have become known for.

**Structural or stratigraphic, we've got the experience
 to provide you with a superior dataset.**

303-347-9011



WOULD YOU LIKE TO INCREASE YOUR PRODUCTION AT A FRACTION OF THE COST OF HORIZONTAL DRILLING?



Well Enhancement Services, LLC is jetting laterals utilizing new technology and coiled tubing. We now have the ability to place hundreds of gallons of acid hundreds of feet away from the well bore. This allows us to not only enhance existing production but to produce reserves previously unreachable. It has established itself by repeatedly increasing production in both new and existing wells. Contact us for more information, questions or to schedule your next well with **WES**.



Please Contact Us:

Phone: (785) 625-5155

Fax: (785) 625-4151

Field: (785) 259-4638

wesofhays@hotmail.com
Box 87, Schoenchen, KS 67667

“Tap into success.....with WES”

www.**GeoSteering**.com

281-573-0500
info@geosteering.com

Free introductory consultation with modeling: let us demonstrate whether images or propagation resistivity could add value to your well.

Personnel with degrees & 20+ years of oilfield experience

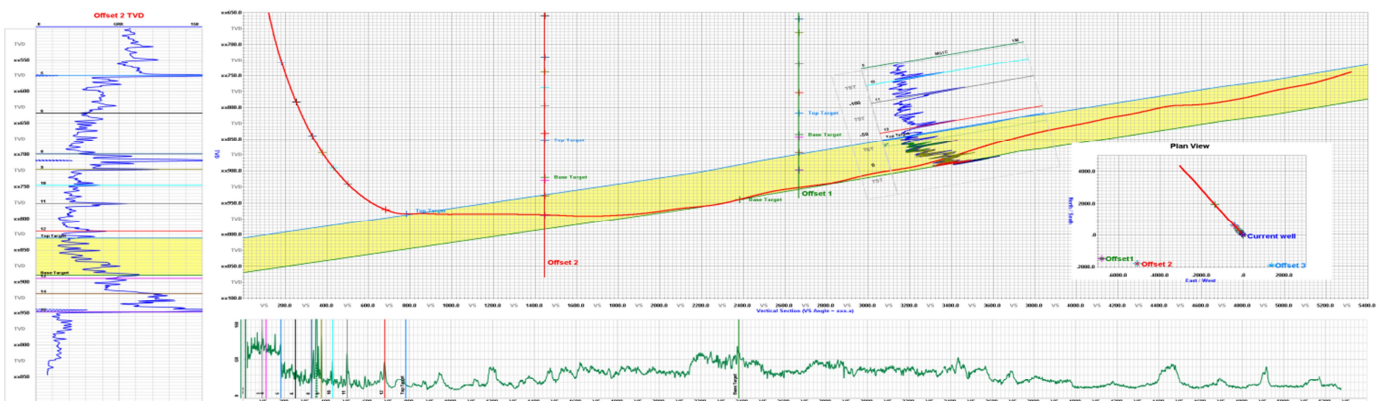
Proprietary software

TST interpretation for GR only jobs

Image displays / interpretation for jobs with azimuthal GR, resistivity or density

Resistivity modelling / interpretation for jobs with LWD propagation resistivity

Real-time (always)



WORLDWIDE LAND ACQUISITION CAPABILITIES



An expert provider of high-density Reservoir Grade 3D (RG3D) seismic data acquisition, Global Geophysical Services is a leader in acquisition technology. Using our AutoSeis® High Definition Recorder we are able to achieve record-setting production levels at a reduced cost.

With the largest single inventory of nodal recording stations, we can record cost-effective data sets with:

- High-Density, Long Offsets
- Rich Azimuth
- Improved Spatial Resolution
- Increased Signal-to-Noise Ratio



Global Geophysical Services, Inc.
13927 S. Gessner Road • Missouri City, TX
tel +1 713-972-9200

www.globalgeophysical.com



SEISMIC ACQUISITION

Check us out at www.breckex.com

Breckenridge Exploration Co., Inc.
Highway 180 E
P.O. Box 789
Breckenridge, TX 76424
Bus: (254) 559-7566

Denver Colorado Office
600 17th Street, Ste. 2800 S
Denver, Colorado 80202-5428
Bus: (303) 563-5301
Mob: (254) 559-0587

Sensible Seismic Acquisition in the Mid-Continent and the Rockies



Neuralog
Turning Paper Into Petroleum

Bryan Mills
Regional Sales Manager

Solutions for Today's Geoscientists

- Scan, Print & Digitize - Logs & Maps
- Geological Interpretation
- Master E&P Data Management

1.281.240.2525

bmills@neuralog.com • www.neuralog.com



PRATT
WELL SERVICE
INC.
Complete Well Service

Since 1946

P.O. Box 847
Pratt, Kansas 67124

Kenneth C. Gates
President

Kevin C. Gates
Vice President

1-800-660-7974
Fax: 620-672-5902

Member KIOGA /AESG

Equipment yard & field office:
1 3/4 miles North on Highway K-61 from 54 & K-61 Junction

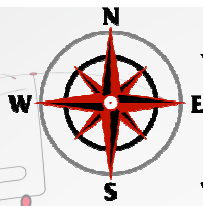
- Experienced Crews
- Rod & Tubing Service
- Workover & Completions
- Swab Tanks
- Pole Masts-Single and Double Derricks
- Air Foam Unit
- Monitor & Water Well Drilling
- Reverse Circulating Pump & Power Swivel Equipment
- Statewide Oilfield Hauling
- Environmental Cleanup
- Vacuum Trucks/Water Trucks
- Dirtwork-Dozers, Grader, Backhoe

Hydrovac Excavation Service

- Cleaning cattle guards
- Mud tank cleaning
- Potholing
- Trenching
- Pipeline Crossings

www.prattwell.com

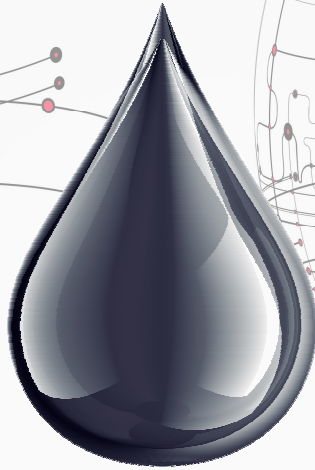




LSGS

LoneStar Geophysical Surveys

It's Real Simple. It's Real Effective.



Locating every last drop.



Superior Seismic Acquisition System



Data Recording 2D, 3D, 4D & VSP



AHV-IV™ Commander 364



Permitting Services



HSE Management System



Front-End Services



Shot Hole Drilling



Brush Clearing



Chainsaw Crews



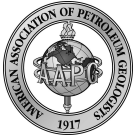
Heliportable



Submit a bid request online:

www.lstargeo.com

441 So. Fretz Avenue Edmond, Oklahoma 73003 (O) 405.726.8626 (F) 405.285.8521
lsgs1@lstargeo.com



Security for AAPG Members
& Their Families
Through Group Insurance

Life
Health
Dental
Disability
Auto and Homeowner
Supplemental Plans

AAPG's
GeoCare Benefits Insurance Program
P. O. Box 9159
Phoenix, AZ 85068-9159
800-337-3140
E-mail: geocarebenefits@agia.com
www.geocarebenefits.com

**It's family
vacation time!**



Family vacations with geologists.

Thank you to KGS member Steve Van Buskirk for the cartoon

*The KGS Library is pleased to
announce a new service*

Creating
LAS files
from our logs
or yours

**\$20.00 per
curve!!**

Quick
turn-around

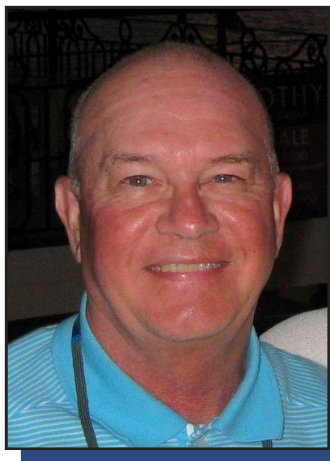
Send us your log file
or tell us which of
ours you would like
converted.

316-256-8676



The Kansas Geological Society maintains its ownership and
copyright when converting library log files to LAS

Memorial - Kris Kennedy



KRIS KENNEDY died April 2, 2014, after a long bout with ALS. Kris was born in Lawrence Kansas April 11, 1953 to Max and Jackie Kennedy. After graduating in geology from Kansas University in 1977, he took a position in Wichita with Ritchie Exploration 1978 to 1980 working with Judd Hipps, and moved to Gear Exploration 1980-85 with fellow geologists Dan Bowles, Ken LeBlanc, Kent Crisler and Tom Hansen. He was an Independent from 1985-2002, and a co-founder of Max-Henry with Jeff Zoller. In 2010, Kris started Valhalla Exploration where he enjoyed working with his geologist son Adam, a 2006 WSU graduate, also with Derek Patterson and Adam Nighswonger. Kris was a long time member of the Kansas Geological Society and served as the chairman of the golf tournament.

He is survived by his mother Jackie, wife Jamie, brother Rick, sons Adam [Wichita] and Sean [Kansas City] and granddaughters Sarah and Olivia. It is with great sadness that we say goodbye to one of our geologists.



NOTICE!!!!

Tech Talks in New Location
We have moved our technical meetings to the same building the Library is in: 212 N. Market 4th floor In the Wisdom Center



Kansas Geological Foundation Video / DVD Collection

The KGF has an extensive collection of videos available for check-out at no charge. Only pay for shipping back.

These are ideal for classroom or general public viewing.

See the web for titles & descriptions
www.kgfoundation.org

Call 316-265-8676
Ask for Janice to check out videos

PROFESSIONAL DIRECTORY

Kirk Rundle
Consulting Geophysicist

3D Seismic Design, Acquisition to Processing QC,
 Interpretation and Analysis, Subsurface Integration
 7340 W. 21st. N., Ste. 100
 Wichita, Kansas 67205

Office: 316-721-1421 Fax: 316-721-1843
 Email: kirk@rundlegeo.com

Blue Ribbon Drilling, LLC

PO Box 279, Dewey, OK 74029

Phone and Fax: 918-534-2322
 John's Cell Phone: 918-440-9639
 Larry's Cell Phone: 918-440-9638
 Jeff's Cell Phone: 918-440-9647

Email: johnroutree@bratco-operating.com



Banks Resources

Scott Banks

Petroleum Geologist
 banksb@aol.com
 Cell: 316.253.8550

1700 N. Waterfront Pkwy.
 Bldg. 300 • Suite C
 Wichita, KS 67206

Phone: 316.558.5262
 Fax: 316.558.5263

WESLEY D. HANSEN

Consulting Geologist

Well site Supervision • Geologic Studies
 212 N. Market, Ste 257
 Wichita, Kansas 67202
 Off: (316) 263-7313
 Mobile: (316) 772-6188
 whansen4651@sbcglobal.net

KEVIN L. KESSLER

INDEPENDENT/CONSULTING PETROLEUM GEOLOGIST



WELLSITE SUPERVISION • GEOLOGIC RESEARCH
 OIL & GAS PROSPECTS
 KANSAS & EASTERN COLORADO

MAILING ADDRESS PHONE
 1199 N. PONDEROSA RD. RES.: (316) 522-7338
 BELLE PLAINE, KS 67013 MOBILE: (316) 706-6636
 EMAIL: KKESSLER1199@AOL.COM

KGJ ENTERPRISES

Contract Oil & Gas Accounting &
 Office Management

Kathryn G. James, MBA (316) 775-0954
 4278 SW 100th ST. (316) 250-5989
 Augusta, KS 67010 kgjames@onemain.com

ROGER L. MARTIN
Independent Petroleum Geologist

200 E 1st St, Ste 405, Wichita, KS 67202

Office 316-833-2722 Cell: 316-250-6970
 KS Field Cell: 316-655-1227
 Fax: 316-425-3829
 Email: rogermartingeo@yahoo.com

ALFRED JAMES III

Petroleum Geologist
 Kansas - Colorado - Utah

200 W. Douglas, Ste. 525, Wichita, Kansas 67202

SIPES # 1111
 Office (316) 267-7592
 alfred.james55@yahoo.com

M. Bradford Rine

Honorary Life Member—Kansas Geological Society

Licensed Geologist—KS. #204
 Registered Professional Geologist—Wyo. # 189
 Certified Geologist—A.A.P.G. # 2647
 S.I.P.E.S. # 1584 S.P.E. #109833-4

PROSPECT EVALUATION • PROSPECT GENERATION
 WELLSITE SUPERVISION • EXPERT TESTIMONY • OPERATIONS
 PROPERTY EVALUATION • RESERVOIR STUDIES
 DRLG./COMP. CONSULTATION

Suite 415
 100 S. Main
 Wichita, KS 67202

Office: (316) 262-5418
 Fax: (316) 264-1328
 Cell: (316) 250-5941



RESOURCE
 MANAGEMENT
 GROUP, INC.

Paul Gunzelman
 President/Geologist

Wichita, Kansas 316.634.6026
 email p.gun@sbcglobal.net

MELLAND ENGINEERING, INC.

Petroleum Engineering & Geological Consulting

James E. Melland, P.E., P.G.
 President

Office: (620) 241-4621 Fax: (620) 241-2621

jamesm@mellandengineering.com
www.mellandengineering.com

P.O. Box 841, McPherson, KS 67460



Steve Van Buskirk
Petroleum Geologist

Van Buskirk Geo-Consulting

15171 Ridgfield Ln
 Colorado Springs, CO 80921
 and
 514 Rumsey
 Kiowa, KS 67070

Home: 719-487-8297
 Cell: 719-393-2900
Nexleveline@msn.com

Available for Well site work



Geotech & Design Services

7171 Highway 6 North, #202
Houston, Texas 77095

Data digitizing, drafting & computer graphics



Tel: (281) 858-7100

Fax: (281) 500-8534

heather.wilson@geotechmap.net

Heather Wilson
Account Manager

www.geotechmap.net

Plan to Play

Monday, June 30th

KGS Golf Tournament

Terradyne Country Club



We Invite You To join

Kansas Geological Foundation

*\$50.00 membership is
tax deductible*

Call 316-265-8676

*Or send checks to:
Kansas Geological Foundation
212 N. Market, Ste. 100
Wichita, KS 67202*

The Following Are For Sale

*Kansas Completion Cards:
Several sets (call for more information)*

*Oklahoma Completion Cards:
2 sets—entire state*

Nebraska Completion Cards—West ranges

New Mexico Completion Cards

North Dakota Completion Cards

Utah Completion Cards

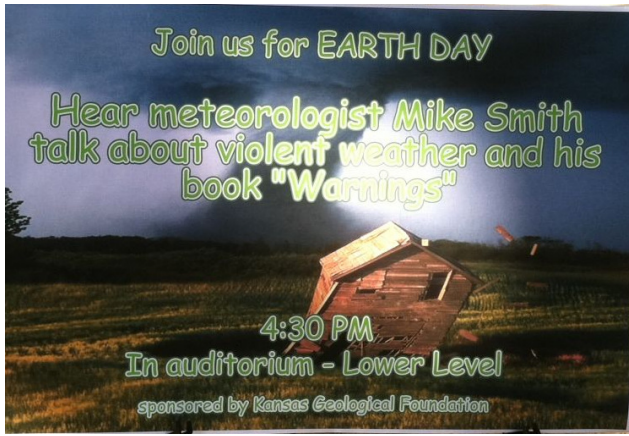
*Microfiche Electric Logs
Kansas
Oklahoma
Texas*

Geological Office Furniture:

- 8-drawer completion card cabinets—21 available
- 7-drawer cabinets—10 available
- Map cabinets—metal—2 available
- Map racks—different sizes—6 available

Call: 316-265-8676
Ask for Ted

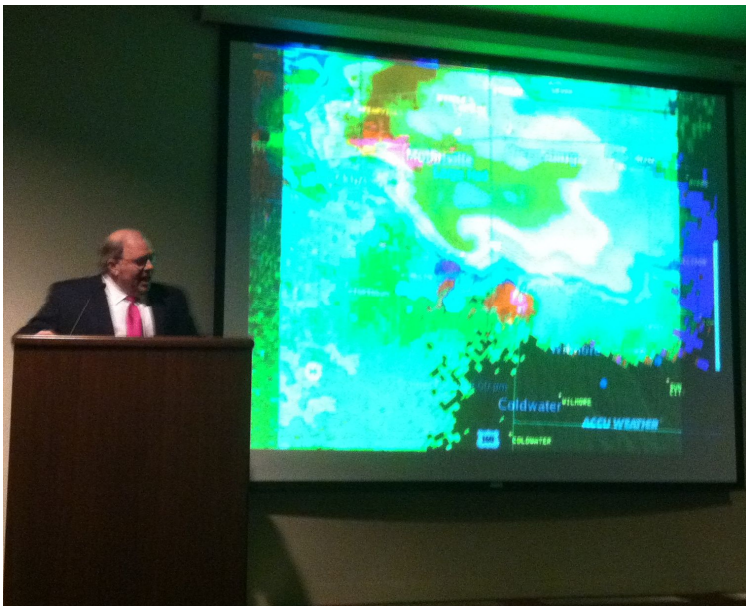
Kansas Geological Foundation Celebrates Earth Day



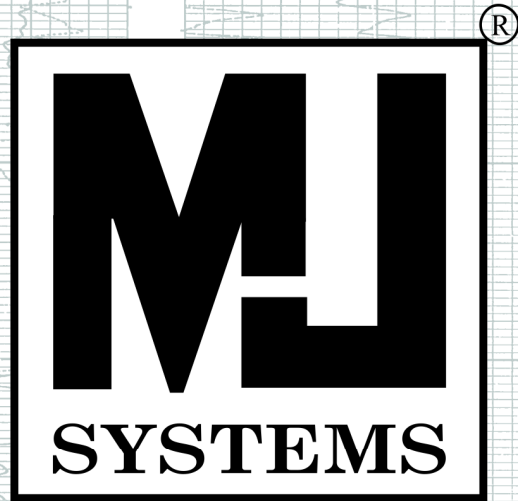
In celebration of Earth Day on April 22, 2014, the Kansas Geological Foundation sponsored a special evening with Meteorologist Mike Smith giving a presentation on violent weather patterns and his new book *Warnings*. The talk was well attended and Mike gave us a very interesting presentation.

We then convened at the Petroleum Club for the 19th Annual Spring Mixer, enjoying great food and drink.

Mike's book *Warnings* is an account of how the warning systems we have today have saved hundreds of lives. He



showed an illustration comparing the two tornadoes; Udall in 1955 and Greensburg in 2007. The two were unusually similar in how they formed, size, and the fact that they both wiped out those towns. The difference was in the number of lives saved in 2007 due to the warning sirens and the ability of meteorologists to track storms with some pretty amazing technology. If you missed this evening, you missed a very interesting talk.



Logs Since 1971

www.mjlogs.com

6 MILLION LOGS

DEPTH REGISTERED

**INTERNET
DOWNLOADS**

**ONLINE
SEARCH**

SEARCH AND FILTER BY DEPTH

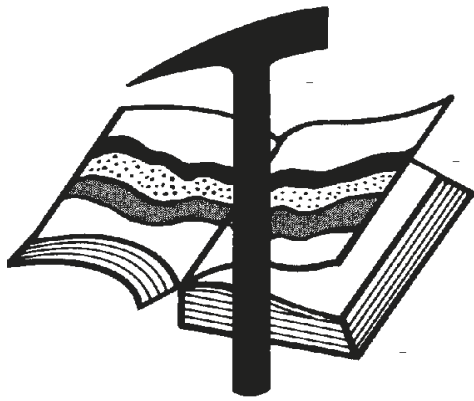
OWN THE LOGS

LogSleuth Software

CLUB WEB

WEB SITE CATALOGUE

1-800-310-6451



Kansas Geological Foundation

Web Site: www.kgfoundation.org

**212 North Market
Wichita, Kansas 67202**

A not-for-profit educational and scientific corporation

GOALS:

- promote geology and earth science
- preserve geological records
- establish memorials and endowments
- support field trips and seminars
- financial aid and grants to students

PLEASE HELP SUPPORT THE FOUNDATION

Kansas Geological Foundation Services

The Kansas Geological Foundation provides the following services as a part of the organization's commitment to educate the public regarding earth science.

Speaker's Bureau

A list of speakers available to talk about various aspects of geology may be obtained by contacting Janice Bright at the KGS Library, 265-8676. This service is free to the public.

DVD/Videotape Library

The KGF maintains a DVD & videotape library focused primarily on the various fields of earth science. These tapes may be checked out without charge by the public. To obtain a list of tapes, please contact the KGS Library, 212 N. Market, Ste. 100, Wichita, KS 67202, or call Janice Bright at 265-8676.

The Kansas Geological Foundation was founded in March, 1989 as a not-for-profit corporation under the guidelines of section 501(c)(3) of the tax code to provide individuals and corporations the opportunity to further the science of geology. It is dedicated to providing charitable, scientific, literary and educational opportunities in the field of geology for the professional geologist as well as the general public.

KGF can receive in-kind donations through which the donor may receive a tax deduction. Of equal importance, the KGF provides the financial resources to sort, process and file this data at the KGS library. If you have a donation to make, please contact the KGF at 265-8676.

Your tax-deductible membership donation helps to defray the cost of processing donations and to support public education programs about the science of geology. Annual membership begins at \$50.00 per year. Donations of \$100.00 or more are encouraged through the following clubs:

Century Club	\$ 100 to \$ 499
\$500 Club	\$ 500 to \$ 999
Millennium Club	\$1000 to \$5000
President's Club	\$5000 and over

WESTERN KANSAS
SOUTHERN NEBRASKA



EASTERN COLORADO
OKLAHOMA & TEXAS PANHANDLES

10 Drilling Rigs

10 Well Service Rigs & Roustabout Services

For contract information, please contact:
Blaine Miller / Drilling Department
316-858-8607 (Direct) or 316-267-3241

For contract information, please contact:
Alan Hays, Well Service Sprvsr.
785-421-2103 or 785-567-8739 (cell)

250 N. Water #300—Wichita, KS 67202

East Highway 24—Hill City, KS 67642

DUKE



DRILLING COMPANY

ROTARY DRILLING CONTRACTOR

620 Hubbard PO Box 823
Great Bend, KS 67530
Phone 620-793-8366

100 S. Main, Ste. 410,
Wichita, KS 67202
Phone 316-267-1331
Fax 316-267-5180



TIMOTHY J. SANDERS
tsanders@tomcatdrilling.com
CELL (316) 259-1652

WWW.TOMCATDRILLING.COM

TOMCAT DRILLING LLC

CORPORATE OFFICE
8301 E. 21ST NORTH, SUITE 360
WICHITA, KANSAS 67206
PHONE (316) 262-8554
FAX (316) 267-0749

FIELD OFFICE AND YARD
225 NW HIGHWAY 270
WOODWARD, OKLAHOMA 73801
PHONE (580) 254-3026
FAX (580) 254-3028



5 ROTARY RIGS SERVING
OKLAHOMA, KANSAS AND
THE TEXAS PANHANDLE

Great Bend (620) 793-5861 Ness City (785) 798-3843 Medicine Lodge (620) 886-5926

ALLIED CEMENTING CO., INC.

Acidizing Available at Medicine Lodge District

Russell (785) 483-2627 Oakley (785) 672-3452

LOCKHART GEOPHYSICAL

2D & 3D Vibroseis Acquisition
ARAM*AIRES Seismic Recording System

1600 Broadway, Suite 1660 • Denver, CO 80202-4915
(303) 592-5220 • info@lockhartgeo.com
for complete information go to: www.lockhartgeo.com

MBC

WELL LOGGING & LEASING
UNMANNED GAS DETECTORS
MUD LOGGING
CERTIFIED INSTRUMENT TECH

AUSTIN GARNER **MARLA GARNER**

24-HOUR PHONE (620) 873-2953
MEADE, KANSAS



FULL LINE SUPPLY STORE
With Pump Shop, New & Used Pipe,
Equipment and Fittings
Exclusive S-55 casing source

STORES:

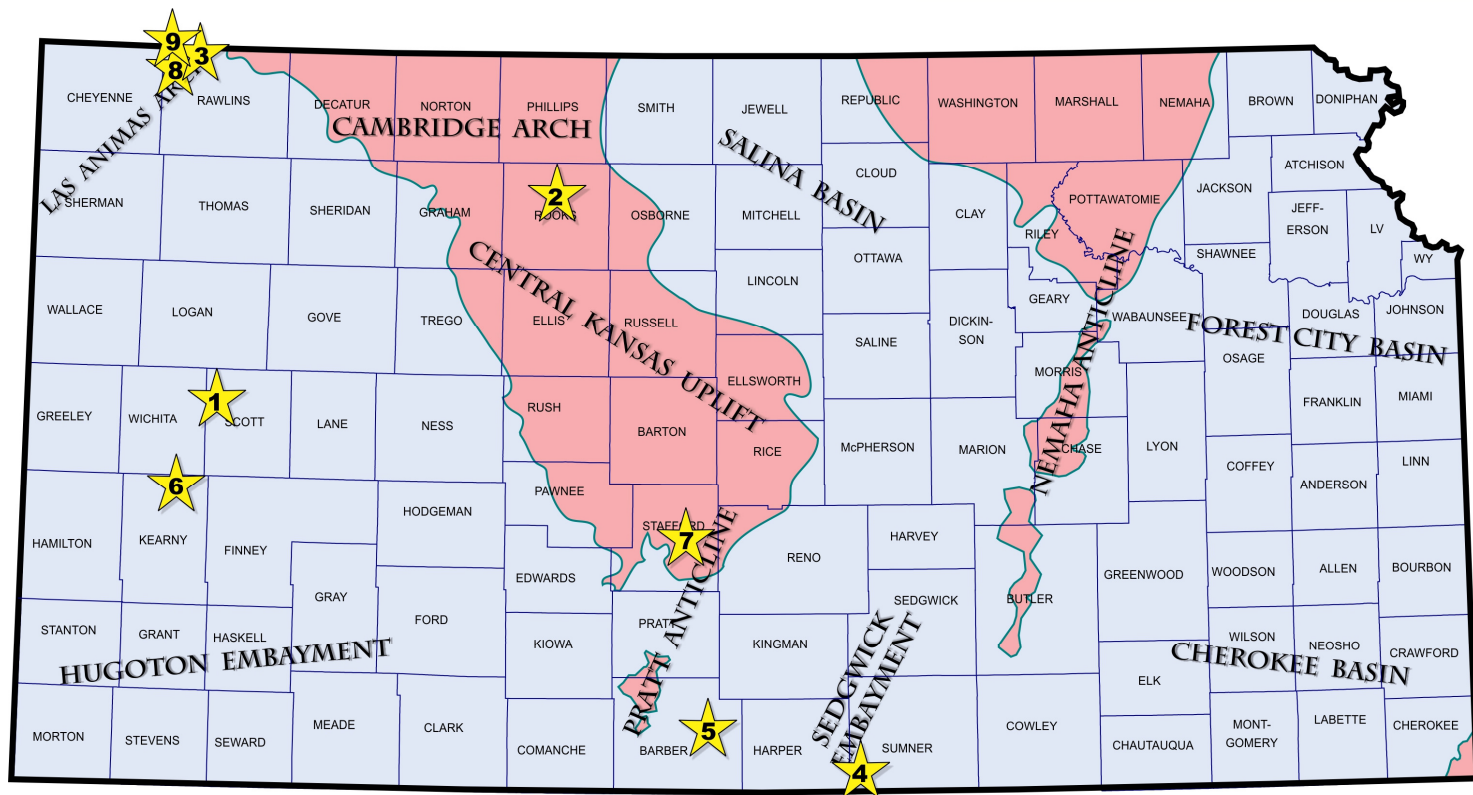
Chanute, KS	620-431-6500	Ness City, KS	800-589-5733
El Dorado, KS	316-321-9323	Osawatomie, KS	913-755-2297
Garden City, KS	877-976-1700	Spivey, KS	620-532-5261
Hays, KS	785-650-0199	McCook, NE	308-345-1542
Hugoton, KS	620-428-6604		

SALES OFFICES:

Wichita, KS	800-777-7672	Denver, CO	303-349-8417
Williston, ND	701-570-9255		

Exploration Highlights

By John H. Morrison, III
Independent Oil & Gas



1 Eagle Creek Corporation, Wichita (KS), has discovered Marmaton oil reserves at a wildcat wellsite in **Scott County**. The 1-20 Decker (API 15-171-21018), spotted in the NE NW SE of section 20- T17s- R34W. The Beaver Lodge Northeast pool opener was drilled to a logger's total depth of 4954 ft. Wellsite is located one mile south of the Beaver Cliff East field in the NE/4 of section 17. **Landmark Resources, Inc.** of Houston (TX) established the Beaver Cliff East field in June last year. Landmark and Eagle Creek are both participants in the development of the field which has produced nearly 48,000 barrels of oil from the Marmaton limestones since its discovery. Eagle Creek's latest discovery on the Decker lease is located about five miles north of Modoc, Kansas.

2 Coral Production Corporation, Denver (CO), is producing an undisclosed amount of oil at their 16-1 Keiswetter Trust (API 15-163-24176), located in the SW SE NW of section 16- T7s- R18W, in **Rooks County**. The wildcat well found oil deposits in the Lansing - Kansas City formation about one and one-half miles northeast of the Axelson Northeast field - a field Coral Production also discovered in August, 2012 which has produced over 15,000 barrels of oil from the LKC zones. Maverick Drilling rig bottomed the Keiswetter well at a depth of 3380 ft. No well details have been released. The new Keiswetter oil field lies three miles west of Stockton, Kansas.

3 Murfin Drilling Company, Wichita (KS), has established the Darkwing oil field (Lansing - Kansas City oil) in **Rawlins County** with the successful completion of the 1-19 Downing A (API 15-153-20962). The wildcat well was drilled to a total depth of 4700 ft at site located in the SE NE NW of section 19- T1s- R35W. The new reserves are situated one and one-quarter miles southwest of the Wilkinson North field (est. 1979) which produced a little over 2000 barrels of oil from the LKC formation over a 7-year span. However, the well lies about three miles southeast of Murfin's prolific Scoda

pool discovery in section 1- T1s- R36W, on the Nebraska state line, that has yielded 366,000 barrels of oil from the LKC zones since July last year. The Downing A lease is located about nine and one-half miles north and three miles west of Beardsley, Kansas.

4 SandRidge Exploration & Production, Inc., Oklahoma City (OK), has completed a horizontal wildcat well one and one quarter miles west of the Eden Road West field (Mississippian oil) - a field they established in April, 2013. The 1-19H Misak 3404 (API 15-191-22711) has been completed for an unknown potential at site located in the N/2 N/2 N2 NE of section 30- T34s- R4W, in **Sumner County**. Horizontal lateral extends in a northerly direction for nearly a mile into section 19- T34s- R4W. True measured depth of the lateral was 9755 ft. The Mississippian oil pool opener is located one and one-half miles north and nine miles west of Caldwell, Kansas. The new field is named Gerberding South.

5 Iuka - Carmi Development LLC, Pratt (KS), is producing an unknown amount of crude oil from the Mississippian formation at their 1-5 Jones (API 15-007-24117), NW SE NE of section 5- T32s- R11W. The **Barber County** wildcat well found new reserves at site nearly one and one quarter miles west of the Whelan Southeast field (est. 1982, Douglas gas, Lansing - Kansas City oil), or about two miles east of Medicine Lodge, Kansas. Operator hired Ninescah Drilling to drill the well to a total depth of 4900 ft. The new field is named Whelan South.

6 Hartman Oil Company, Inc., Wichita (KS), has a new Marmaton oil discovery in **Kearny County**, southwest Kansas. Operator drilled the 11-2 Kuhlman (API 15-093-21896) in the SW SW SW of section 11- T21s- R36W. Total depth was ceased at 5122 ft. Oil deposits were discovered in the Fort Scott limestone formation. No completion details have been released. The new Kuhlman field is

situated over three miles from closest known production in the Beymer Northwest field, which has produced over 236,000 barrels of oil from the Marmaton formations from two wells since its founding in 1966. Well site is located about twenty miles north of Lakin, Kansas.

Murfin Drilling Company, Inc., Wichita (KS), has successfully completed a new oil discovery in Stafford County, as well as, a second discovery in Rawlins County, and the completion of a third well, a wash-down of a 1980 dry “show-hole, that has resulted in a daily production rate of 200 barrels of oil per day, also in Rawlins County.

7 First, in **Stafford** County, Murfin Drilling’s 1-2 Rank OWWO (API 15-185-22964), spotted in the west-half of NW NW in section 2-T23s- R12W, found new isolated Viola oil deposits about three-quarter mile west of the 49 year old Pleasant Grove South oil field (Lansing - Kansas City and Arbuckle oil). Operator re-entered the well, originally drilled to the Simpson formation by Coronado Oil & Gas in June, 1994, and cleaned it out to total depth of 3741 ft. Hole was then deepened to 3900 ft into the Arbuckle with no significant shows and was plugged back to a depth of 3838 ft. Completion details in the Viola remains confidential. Top of the Viola was logged at 3652 (-1814 kb). The new Mike’s Meteor field lies one mile south and two miles east of Hudson, Kansas.

8 In **Rawlins** County, Murfin Drilling has a new oil discovery at the 1-14 Burke Trust B (API 15-153-20959), located in the west-half of NE NW NE in section 14- T1s- R36W, about thirteen miles north-northwest of the town of McDonald, Kansas. The wildcat well and new Golden Cascade pool opener is producing an undisclosed amount of crude from the Lansing - Kansas City formation. Company-owned Rig 8 drilled the well to a total depth of 4800 ft. Completion details are not available. Well site is located one and one-quarter miles northeast of closest established production in the East Fork field. The field was discovered by Wichita-based BEREXCO, Inc. late last year. BEREXCO, Inc. and Murfin Drilling have since developed the East Fork field and have produced over 24,000 barrels of oil from the Shawnee (Oread) and Lansing - Kansas City formations. Murfin’s new field has not been named.

9 In conclusion, Murfin Drilling has completed their 1-1 Walter A OWWO (API 15-153-20404) for 200 barrels of oil and 16 barrels of water per day with pay coming from the Lansing - Kansas City formation. The well was originally drilled by PETX Petroleum Corporation in 1980 in the west-half of NW SE in section 1- T1s- R36W. The “show-hole” was drilled to a total depth of 4940 ft, or 90 ft into the Mississippian formation. Top of the Lansing was logged at 4182 (-962 kb). The well is a part of the recently established Scoda field which Murfin Drilling discovered in August last year near the Nebraska border. Drilling in Kansas was an extension to an extensive oil play across the state line. The Scoda field in Kansas has produced nearly 223,000 barrels of oil since it began in August, 2013. Murfin Drilling has completed ten producers and are in various stages of completion on another twelve development wells. Field area lies twelve miles north and three and one-half miles west of Beardsley, Kansas.

WSU Spring Break Field Trip to New Mexico

The first day of the trip we looked at road outcrops in Albuquerque, NM. At the first outcrop we saw the Tensill Formation, a Permian aged back reef of dolomitized limestone. We stopped at an outcrop to examine the Yates Formation. It consisted of different layers of limestone with gypsum and sandstone. We stopped at the Seven Rivers Formation where we could see evidence of 7 ancient rivers, hence the name. At the next outcrop we saw the Queen Formation which was an unusually thick sandstone.

Day 2 we stopped and hiked through Carlsbad caverns. Day 3 we looked at the Castille Formation. A vary formation of layering limestone and gypsum where each coupling shows one year of time. Afterwards we hiked the Permian Reef Trail in the Guadalupe Mountains and saw Permian reef formations and fossils.

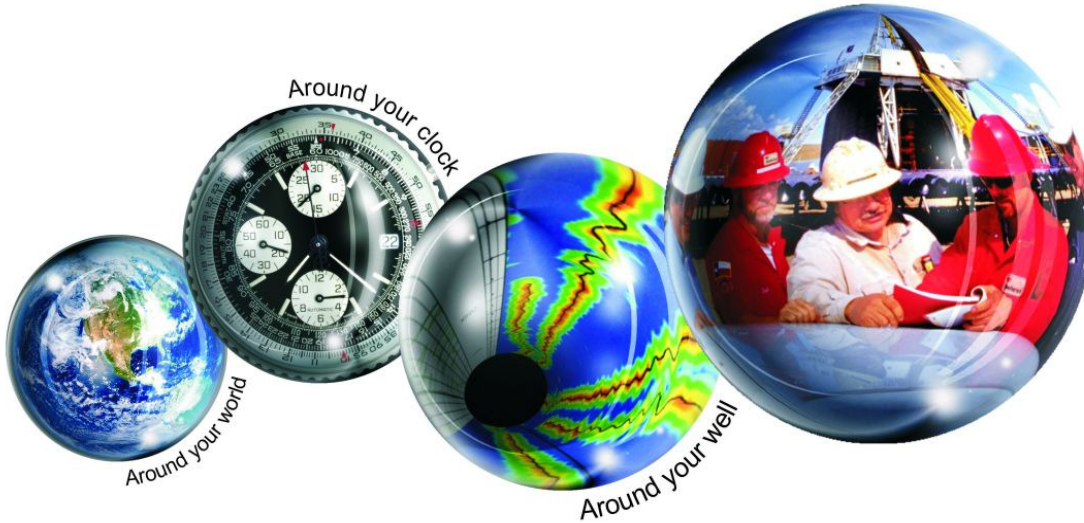
Day 4 we went to White Sands National Monument, New Mexico and did a 5 mile barefoot trek through the dunes. After white sands we traveled to Carrizozo, New Mexico and saw Quaternary aged basalt lava flows. So over they trip we saw a Permian fore-reef, back-reef and reef, massive caverns, hundreds of thousands of years represented in vary, gypsum sand dunes and 10,000 year old lava flows.

- Nate Lara, WSU geology student



Kansas Geological Foundation Memorials

KGS Member	Date Deceased	Memorial Est.	KGS Member	Date Deceased	Memorial Est.
Dan Bowles	09/89	1990	Edward B. Donnelly	08/01	2001
John Brewer	10/89	1990	Richard P. Nixon	02/02	2002
George Bruce	08/89	1990	Robert W. Frensley	12/01	2002
Robert Gebhart	01/90	1990	Gerald W. Zorger	01/02	2002
Ray Anderson, Jr.	11/90	1990	Don L. Calvin	03/02	2002
Harold McNeil	03/91	1991	Claud Sheats	02/02	2002
Millard W. Smith	08/91	1991	Merle Britting	2002	2002
Clinton Engstrand	09/91	1991	Harold Trapp	11/02	2002
M.F. "Ted" Bear	10/91	1991	Donald M. Brown	11/02	2003
James & Kathryn Gould	11/91	1991	Elwyn Nagel	03/03	2003
E. Gail Carpenter	06/91	1993	Robert Noll	09/03	2003
Benton Brooks	09/92	1992	Benny Singleton	09/03	2003
Robert C. Armstrong	01/93	1993	Jay Dirks	2003	2003
Nancy Lorenz	02/93	1993	J. Mark Richardson	02/04	2004
Norman R. Stewart	07/93	1993	John "Jack" Barwick	02/01	2004
Robert W. Watchous	12/93	1993	Richard Roby	03/04	2004
J. George Klein	07/94	1994	Ruth Bell Steinberg	2004	2004
Harold C.J. Terhune	01/95	1995	Gordon Keen	03/04	2004
Carl Todd	01/95	1995	Lloyd Tarrant	05/04	2004
Don R. Pate	03/95	1995	Robert J. "Rob" Dietterich	08/96	2004
R. James Gear	05/95	1995	Mervyn Mace	12/04	2004
Vernon Hess	06/95	1995	Donald Hoy Smith	04/05	2005
E. K. Edmiston	06/95	1995	Richard M. Foley	06/05	2005
Jack Rine	07/95	1995	Wayne Brinegar	06/05	2005
Lee Cornell	08/95	1995	Charles B. Moore	09/96	2005
John Graves	10/95	1995	Jack Heathman	05/06	2006
Wilson Rains	10/95	1995	Charles Kaiser	09/06	2006
Heber Beardmore, Jr.	09/96	1996	Rod Sweetman	08/06	2006
Elmer "Lucky" Opfer	12/96	1996	Karl Becker	10/06	2006
Raymond M. Goodin	01/97	1997	Frank Hamlin	10/06	2006
Donald F. Moore	10/92	1997	Marvin Douglas	12/06	2006
Gerald J. Kathol	03/97	1997	Robert W. Hammond	04/07	2007
James D. Davies	08/88	1997	Eldon Frazey	04/07	2007
R. Kenneth Smith	04/97	1997	Pete Amstutz	05/07	2007
Robert L. Dilts	05/97	1997	Charles Spradlin	05/07	2007
Delmer L. Powers	06/72	1997	Donald R. "Bob" Douglass	09/07	2007
Gene Falkowski	11/97	1997	Vincent Hiesch	11/07	2007
Arthur (Bill) Jacques	01/98	1998	Glen C. Thrasher	03/08	2008
Bus Woods	01/98	1998	Peg Walters	06/08	2008
Frank M. Brooks	03/98	1998	Theodore "Ted" Sandberg	07/08	2008
Robert F. Walters	04/98	1998	James Ralstin	11/08	2008
Stephen Powell	04/98	1998	Earl Brandt	04/09	2009
Deane Jirrels	05/98	1998	Walter DeLozier	05/09	2009
William G. Iversen	07/98	1998	Don D. Strong	01/10	2010
Ann E. Watchous	08/98	1998	John Stone	02/10	2010
W.R. "Bill" Murfin	09/98	1998	Craig Caulk	03/10	2010
Donald L. Hellar	11/98	1998	Joseph E. Moreland, Jr.	03/10	2010
Joseph E. Rakaskas	01/99	1999	Gene Garmon	03/10	2010
Charles W. Steincamp	02/99	1999	James F. Dilts	05/10	2010
Robert and Betty Glover	10/96	1998	Jerry Pike	05/10	2010
Howard E. Schwerdtfeger	11/98	1999	Donald Hollar	06/10	2010
W. W. "Brick" Wakefield	03/99	1999	Delbert Costa	08/10	2010
V. Richard Hoover	01/00	2000	John Tanner	08/10	2010
Warren E. Tomlinson	01/00	2000	William (Bill) Owen	09/10	2010
James A. Morris	01/00	2000	Harold (Hal) Brown	10/10	2010
Eric H. Jager	03/00	2000	Edmund G. Lorenz	11/10	2010
Kenneth W. Johnson	03/00	2000	Thomas E. Black	05/11	2011
Dean C. Schaake	03/00	2000	Wayne E. Walcher	07/11	2011
Fred S. Lillibridge	05/00	2000	Henry F. Filson	07/11	2011
Jerry A. Langrehr	07/00	2000	Thomas Ray	07/11	2011
Clark A. Roach	07/00	2000	Edgar E. Smith	09/11	2012
Floyd W. "Bud" Mallonee	10/00	2000	Marilyn Messinger	06/13	2013
Ralph W. Ruuwe	09/00	2000	Micheal Mitchell	9/13	2013
Robert L. Slamal	02/01	2001	Orvie Howell	11/13	2013
Jerold E. Jespersion	06/01	2001	James Thompson	11/13	2013
William A. Sladek	06/01	2001	Dick Rowland	09/13	2014
Harlan B. Dixon	06/01	2001			



All Around You

Weatherford has always been driven by your needs.

Now, with the addition of Precision Energy Services we're continuing to build a world of skills, services and technologies that revolve – and evolve – around you.

The result?

An expanded global network of 25,000 people, 730 service bases and 87 manufacturing facilities in 100 countries.

This increased local knowledge and service is there to support you anywhere, anytime. From midday in the Middle East to midnight in the middle of nowhere.

And with greatly strengthened capabilities in the critical evaluation skills of directional drilling and wireline logging, we can do even more to improve the profitability and productivity of your wells.

To see how our sphere of services can work for you, visit www.weatherford.com or contact either your Weatherford or former Precision Energy Services representative.

Drilling | Evaluation | Completion | Production | Intervention

© 2006 Weatherford International Ltd. All rights reserved. Incorporates proprietary and patented Weatherford technology.

CHANGE SERVICE REQUESTED

KGS BULLETIN
 May—June 2014

May 2014

Sun	Mon	Tue	Wed	Thu	Fri	Sat
				1	2	3
4	5	6	7	8	9	10
11	12	13 KGS Board Mtg.	14 KGF Board Mtg.	15	16	17
18	19	20	21	22	23	24
25	26 Library closed	27 Tech Talk	28	29	30	31

June 2014

Sun	Mon	Tue	Wed	Thu	Fri	Sat
1	2	3	4	5	6	7
8	9	10	11	12	13	14
15	16	17	18	19	20	21
22	23	24	25	26	27	28
29	30 KGS Golf 